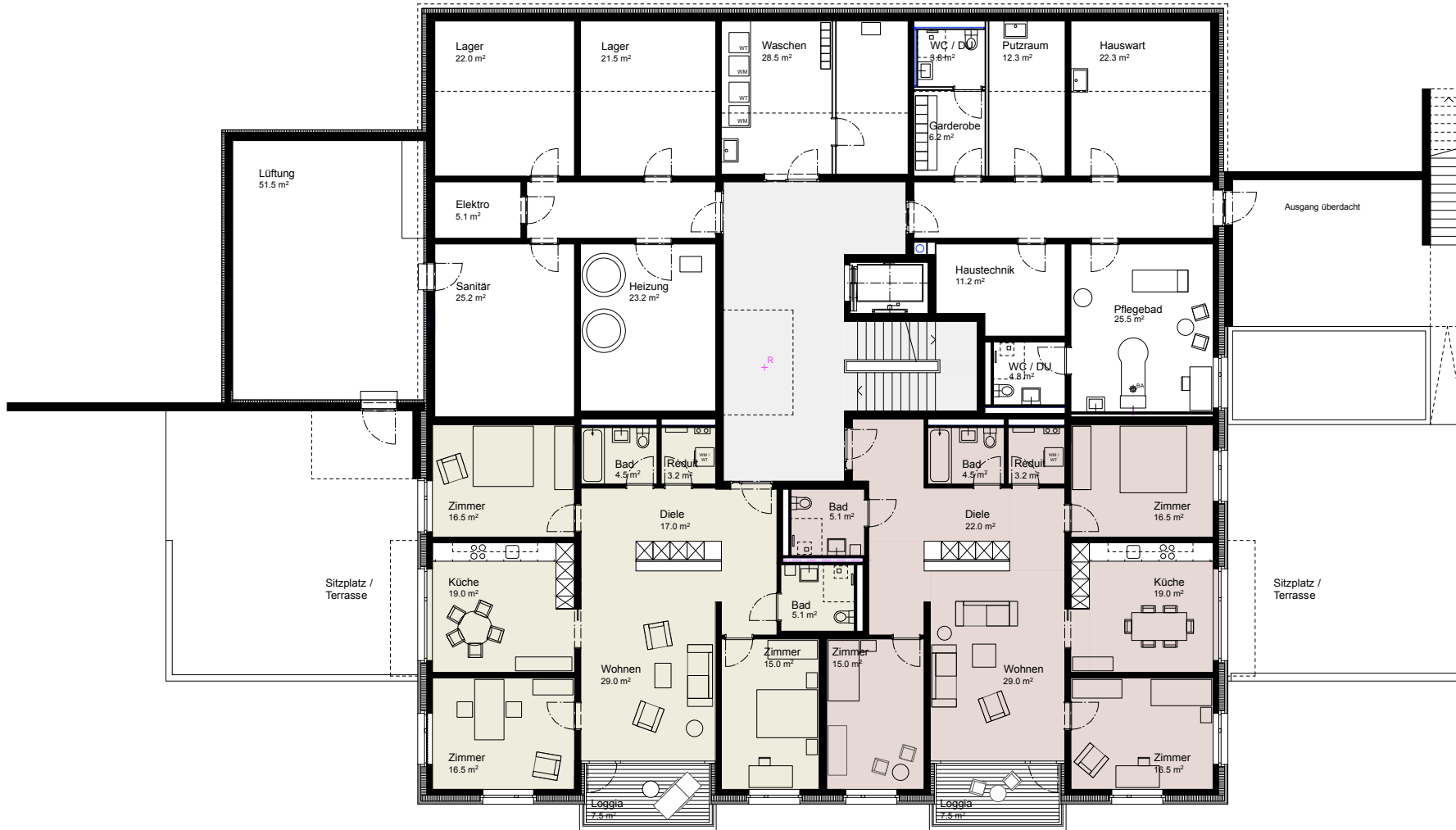


2. Untergeschoss

RESIDENZA DULEZI 7188 Sedrun
 Residenza Dulezi SA / Gemeinde Tujetsch 7188 Sedrun

Stand: 30. Mai 2018
 SCHAUFELBÜHL RUF ARCHITEKTEN CHUR



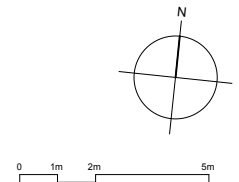
Wohnung 2
4½ Zi-Whg
125.0 m²

Wohnung 1
4½ Zi-Whg
130.0 m²

1. Untergeschoss

RESIDENZA DULEZI 7188 Sedrun
Residenza Dulezi SA / Gemeinde Tujetsch 7188 Sedrun

Stand: 30. Mai 2018
SCHAUFELBÜHL RUF ARCHITEKTEN CHUR





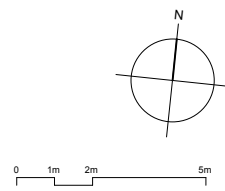
Wohnung 4
2½ Zi-Whg
63.0 m²

Wohnung 3
2½ Zi-Whg
63.0 m²

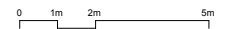
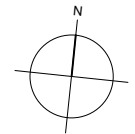
Erdgeschoss

RESIDENZA DULEZI 7188 Sedrun
Residenza Dulezi SA / Gemeinde Tujetsch 7188 Sedrun

Stand: 30. Mai 2018
SCHAUFELBÜHL RUF ARCHITEKTEN CHUR



Wohnung 10
1½ Zi-Whg
41.0 m²

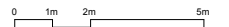
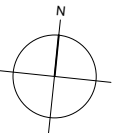
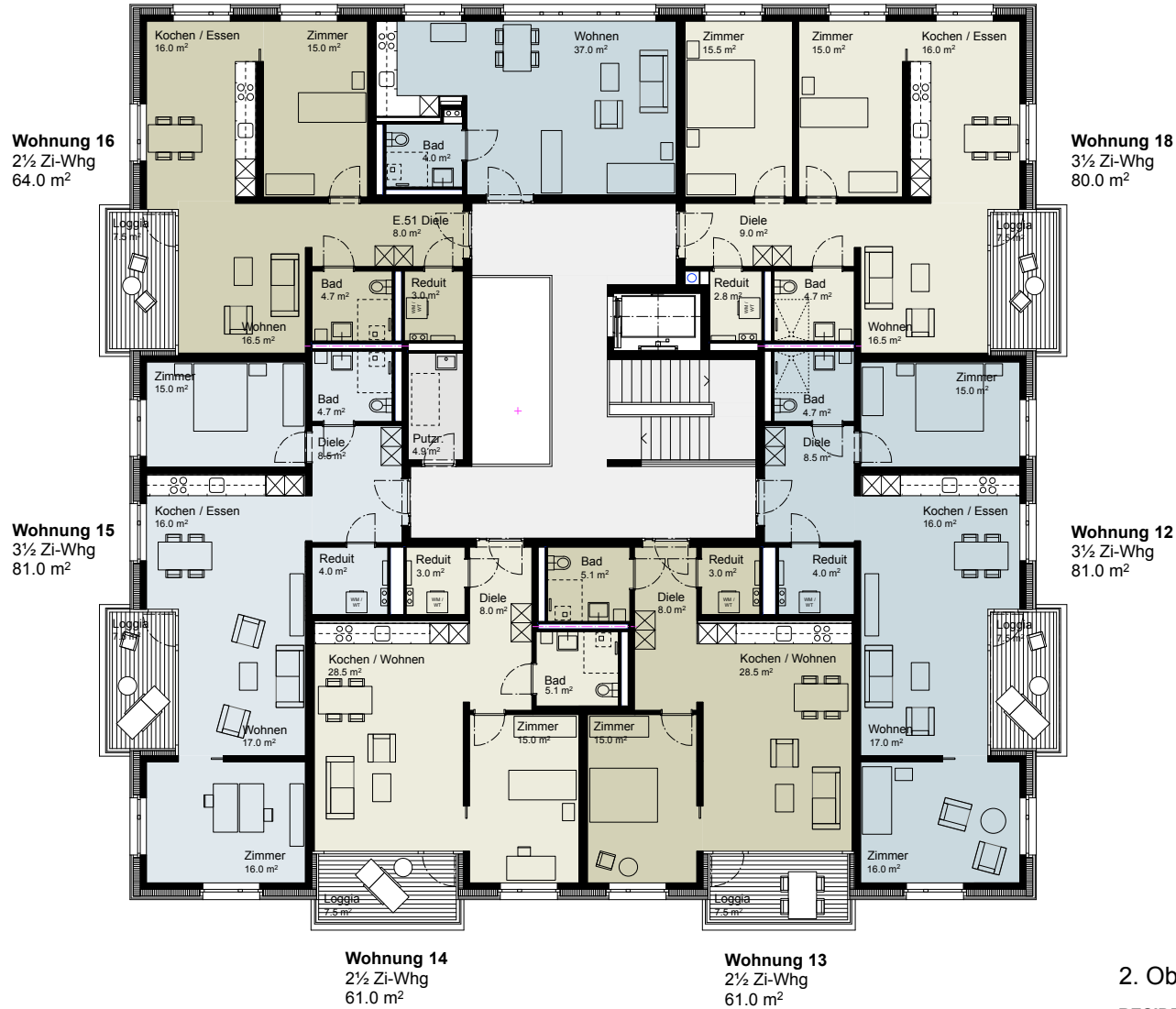


1. Obergeschoss

RESIDENZA DULEZI 7188 Sedrun
Residenza Dulezi SA / Gemeinde Tujetsch 7188 Sedrun

Stand: 30. Mai 2018
SCHAUFELBÜHL RUF ARCHITEKTEN CHUR

Wohnung 17
1½ Zi-Whg
41.0 m²



2. Obergeschoss

RESIDENZA DULEZI 7188 Sedrun
Residenza Dulezi SA / Gemeinde Tujetsch 7188 Sedrun

Stand: 30. Mai 2018
SCHAUFELBÜHL RUF ARCHITEKTEN CHUR